

PDA6846-SS & PDA6848-SS Stainless Steel U-Bolt Kits

Instruction Manual



**PDA6846-SS U-Bolt Kit
(1 U-Bolt)**



**PDA6848-SS U-Bolt Kit
(2 U-Bolts)**

KEY FEATURES

- Mounts Instruments to 1.5" or 2" Pipes
- Kits with One and Two U-Bolts
- All Necessary Hardware Provided
- 316 Stainless Steel

OVERVIEW

The PDA6846-SS and PDA6848-SS U-Bolt Kits provide convenient ways to mount Precision Digital instruments to 1.5" or 2" pipes. The PDA6846-SS kit consists of one U-bolt and hardware and the PDA6848-SS kit consists of two U-bolts and hardware. The U-bolt kits are made from 316 stainless steel and include all necessary hardware to mount the instrument to the pipe.

MOUNTING INSTRUCTIONS

PDA6846-SS (1 U-bolt)

1. Orient the groove on the back of the instrument with the pipe and secure it to the pipe with the U-bolt and hardware provided.

PDA6848-SS (2 U-bolts)

1. Orient the groove on the back of the instrument with the pipe and secure it to the pipe with the two U-bolts and hardware provided.

ORDERING INFORMATION

Model	Description	Compatible Instruments	Weight lb (kg)
PDA6846-SS	Stainless Steel U-Bolt Kit (1 U-bolt) for 1.5" or 2" pipe	PD67XX, PD68XX, PD69XX	0.20 (0.09)
PDA6848-SS	Stainless Steel U-Bolt Kit (2 U-bolts) for 1.5" or 2" pipe	PD8 Series	0.40 (0.18)

Disclaimer

The information contained in this document is subject to change without notice. Precision Digital Corporation makes no representations or warranties with respect to the contents hereof, and specifically disclaims any implied warranties of merchantability or fitness for a particular purpose. See Warranty Information and Terms & Conditions on www.predig.com for complete details.

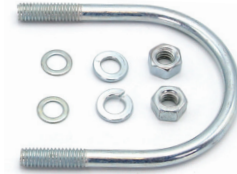
© 2023 Precision Digital Corporation. All rights reserved.

PRECISION DIGITAL CORPORATION
233 South Street • Hopkinton MA 01748 USA • Tel (800) 343-1001

CONTENTS

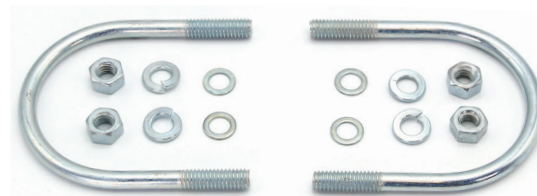
PDA6846-SS (1 U-bolt)

- All hardware is stainless steel
- Two (each) washers, lock washers & nuts
- One U-bolt



PDA6848-SS (2 U-bolts)

- All hardware is stainless steel
- Four (each) washers, lock washers & nuts
- Two U-bolts



MOUNTING REAR VIEW

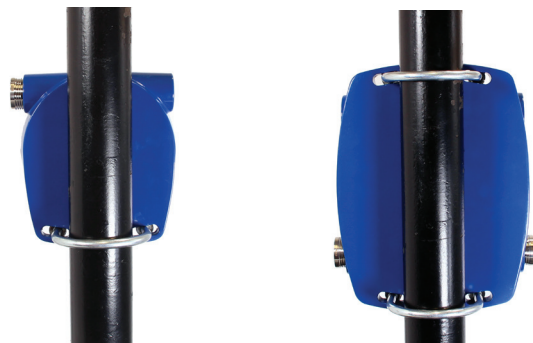


Figure 1: Rear Views of PDA6846 (left) and PDA6848 (right) both mounted on 1.5" pipe

⚠ WARNING

Cancer and Reproductive Harm - www.P65Warnings.ca.gov

LIM6846_B 08/23

**PRECISION
DIGITAL**
www.predig.com