

PDA6631-SS U-Bolt Kit & PDA6863-SS Pipe Mounting Kit

Instruction Manual



PDA6631-SS U-Bolt Kit for 1.5" Pipe



PDA6863-SS Pipe Mounting Kit for 2" Pipe

KEY FEATURES

- Mounts PD663 and PD663-SS to 1.5" or 2" Pipe
- All Necessary Hardware Provided
- 316 Stainless Steel

OVERVIEW

The PDA6631-SS and PDA6863-SS provide convenient ways to mount Precision Digital's PD663 and PD663-SS Explosion-Proof Loop-Powered meters to 1.5" or 2" pipes. The PDA6631-SS mounts to a 1.5" pipe with a U-bolt and the PDA6863-SS mounts to a 2" pipe with a mounting plate and a U-bolt. The mounting kits are made from 316 stainless steel and include all necessary hardware to mount the meter to the pipe.

MOUNTING INSTRUCTIONS

PDA6631-SS (1.5" pipe):

1. Orient the groove on the back of the PD663 with the pipe and secure the PD663 to the pipe with the U-bolt and hardware.

PDA6863-SS (2" pipe):

1. Attach the mounting plate through the mounting flanges on the PD663 with hardware provided.
2. Secure the PD663 to the pipe with the U-bolt and hardware.

ORDERING INFORMATION

Model	Description	Compatible Instruments	Weight lb (kg)
PDA6631-SS	Stainless Steel U-Bolt Kit to Mount PD663 to 1.5" pipe	PD663 / PD663-SS	0.15 (0.06)
PDA6863-SS	Stainless Steel Pipe Mount Kit to Mount PD663 to 2" pipe	PD663 / PD663-SS	0.40 (0.18)

Disclaimer

The information contained in this document is subject to change without notice. Precision Digital Corporation makes no representations or warranties with respect to the contents hereof, and specifically disclaims any implied warranties of merchantability or fitness for a particular purpose. See Warranty Information and Terms & Conditions on www.predig.com for complete details.

© 2023 Precision Digital Corporation. All rights reserved.

CONTENTS

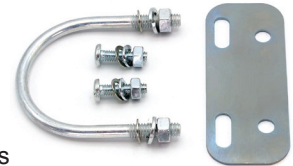
PDA6631-SS (1.5" pipe)

- All hardware is stainless steel
- Two (each) washers, lock washers & nuts
- One U-bolt



PDA6863-SS (2" pipe)

- All hardware is stainless steel
- One mounting plate
- Two (each) bolts, washers, lock washers & nuts to mount meter to plate
- One U-bolt with two (each) washers, lock washers & nuts to mount plate to pipe



MOUNTING (Rear View)



Figure 1: Rear Views of PDA6631-SS (left) and PDA6863-SS (right) Both Mounted on 1.5" Pipe



WARNING
Cancer and Reproductive Harm - www.P65Warnings.ca.gov

LIM6631_B 08/23